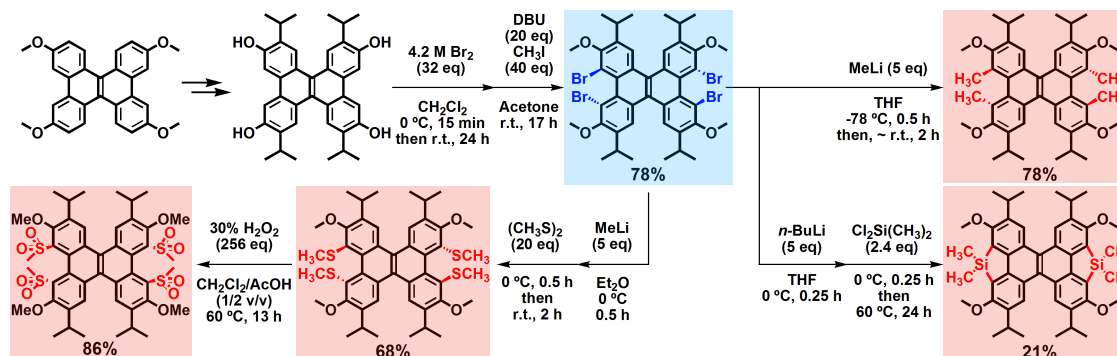
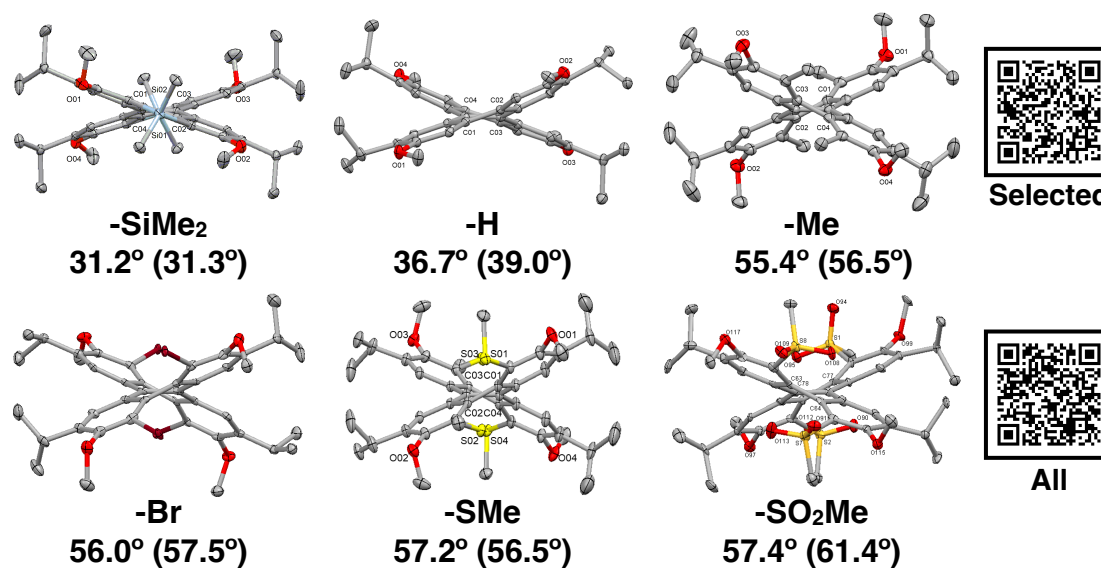




1. Summary S. Kamiguchi, R. Akasaka, N. Yoshida, T. Imai, Y. Yamaoka, T. Amaya, T. Iwasawa, *Tetrahedron Lett.* **2022**, 92,153664.



2. Torsion angles (Crystallographic and Computational Data)



3. Correlation between substituents (= torsion angles) and structural features.

